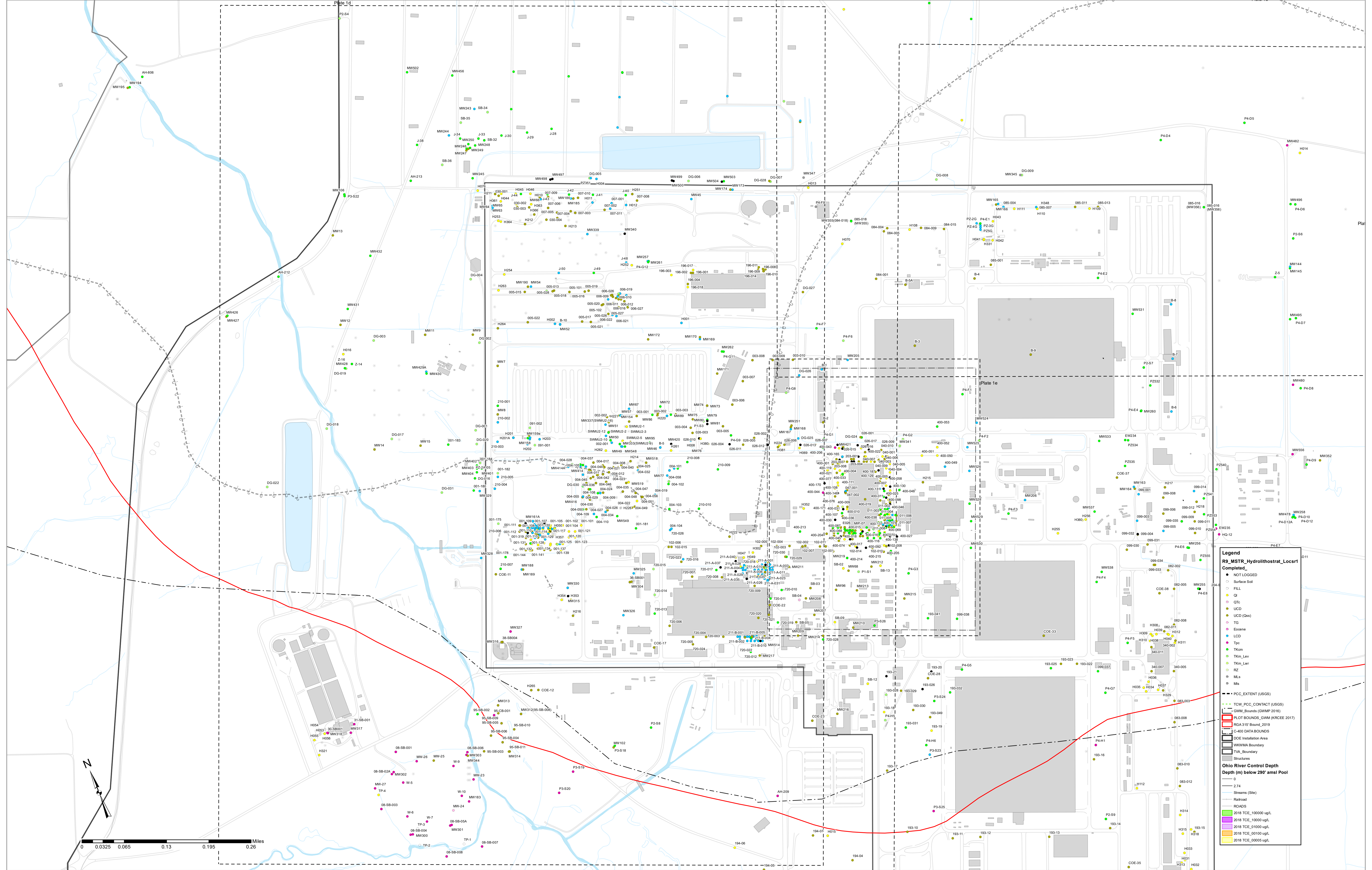


Plate 1d. R9 Hydrolithostratigraphy Dbase Western Industrial Site Locations.
 (Draft lithologic/stratigraphic boring completion shown by location.)



Legend

R9_MSTR_Hydrolithostrat_Locsr Completed

- NOT LOGGED
- Surface Soil
- FILL
- CI
- CII
- LCD
- LCD (0w)
- TG
- Eocene
- LCD
- Tpc
- TKm
- TKm_Lwr
- TKm_Lwr
- RZ
- ML
- Ms

Ohio River Control Depth
 Depth (m) below 29' amsl Pool

- 0
- 2.74
- Stream (Site)
- Railroad
- ROADS

Other Symbols:

- PCC_EXTENT (USGS)
- TCW_PCC_CONTACT (USGS)
- GWM_Bounds (GWMP 2016)
- PLOT BOUNDS_GWM (KRCEE 2017)
- TCA-SIS Bound, 2019
- C-400 DATA BOUNDS
- DOE Installation Area
- WQWMA Boundary
- TVA_Boundary
- Structures

Data Point Legend:

- 2018 TCE_100000 ug/L
- 2018 TCE_10000 ug/L
- 2018 TCE_01000 ug/L
- 2018 TCE_00050 ug/L

Utilize Left PDF Frame to turn Layers On/Off. (Data Pts, Labels, Contours, Surface, Legend, Plumes, Maps, Map Features)

Clustered data points may not be labeled because of figure scale.
 See posted R9_MSTR_Hydrolithostrat_Dbase_Locsr.csv or .shp for detailed location information.